



INDONESIAN JOURNAL ON GEOSCIENCE

Geological Agency
Ministry of Energy and Mineral Resources

Journal homepage: <http://ijog.geologi.esdm.go.id>
ISSN 2355-9314, e-ISSN 2355-9306



A New Pollen Preparation Technique Using Technical Chemicals

WORO SRI SUKAPTI¹ and EKO YULIANTO²

¹Center for Geological Survey, Geological Agency, Jl. Diponegoro 57 Bandung 40122 Indonesia

²Research Center for Geological Hazard, National Research and Innovation Agency,
Jl. Sangkuriang Bandung 40135 Indonesia

Corresponding author: ekoy909@gmail.com

Manuscript received: October, 25, 2022; revised: June, 03, 2024;
approved: August, 26, 2024; available online: August, 30, 2024

Abstract – The widespread use of pollen analysis in various fields in Indonesia is hampered mainly by the application of pro-analyst chemicals in standard pollen preparation. To solve this problem, a new pollen preparation technique using technical chemicals was developed. The results of comparison between this new technique with the standard technique used before showed that the pollen-spore yields, the quality of pollen slides, and the slide visibility resulted from both techniques is comparable. Furthermore, the new technique reduced the chemical cost of the standard technique by IDR. 87,125.00 per sample.

Keywords: Palynology, preparation technique, technical chemicals, safer and cheaper procedure

© IJOG - 2024

How to cite this article:

Sukapti, W.S. and Yulianto, E., 2024. A New Pollen Preparation Technique Using Technical Chemicals. *Indonesian Journal on Geoscience*, 11 (2), p.313-324. DOI: [10.17014/ijog.11.2.313-324](https://doi.org/10.17014/ijog.11.2.313-324)

INTRODUCTION

Pollen study in Indonesia was pioneered by Polak (1933) in the Lakkok-Ciamis swamp area, West Java. Subsequently, pollen study in Indonesia and the surrounding area continued, albeit with a very low frequency. In the 1960s-1970s, several palynologists published several papers including van Veen (1958), Muller (1961, 1964, 1966, 1968, 1972), Hopping (1967), Germeraad *et al.* (1968), Powell (1970), Walker (1970), Flenley (1972, 1973), Sowmi (1973), Anderson and Muller (1975).

In the decade of the 70s, several Indonesian palynologists began to cultivate this discipline. However, the development and utilization of pollen study in Indonesia is still limited. One of the reasons is the high cost of preparation and the difficulty in obtaining the chemicals used in today's standard preparations. The high cost of

preparation is due to the variety of chemicals used in standard preparation techniques. The standard uses pro-analyst chemicals (p.a) which are quite expensive. The high cost of preparation not only hinders the development of palynology at universities, but also disturb the widespread use of pollen analysis in the world of oil and coal exploration, archaeology, agricultural industries such as the honey industry, environmental health, and forensics. The use of pro-analyst chemicals in pollen preparations also requires higher safety standards due to the high concentration of pro-analyst chemicals. This condition also hinders the widespread use of pollen analysis, especially in universities in Indonesia.

In addition, certain types of chemicals have become more difficult to obtain in recent times for crime prevention reasons. The difficulty of obtaining acetic anhydride is an example. This acid

has been abused by criminals for extracting illegal drugs namely ecstasy. As a result, the police have tightened regulations on the sale of acetic anhydride. The purchasing procedure becomes more convoluted. The purchase quantity is also limited.

To accelerate the development of palynology, the difficulties associated with this pollen preparation need to be addressed immediately. Preparation techniques that are much cheaper and affordable especially for students and other users of pollen analysis need to be developed. This paper discusses several modifications to the standard pollen preparation technique. This modification is expected to result in a cheaper and safer preparation technique.

METHODS AND MATERIALS

Methods

The development of cheaper and safer preparation techniques was carried out empirically. For this purpose, modifications to the preparation technique were designed and piloted. The trial results will be compared with the results of the standard preparation techniques used at the Palynology Laboratory, Center for Geological Survey (PSG) (Figure 1).

The standard pollen preparation technique uses pro-analyst chemicals (p.a). In the modified preparation technique, pro-analyst chemicals such as hydrochloric acid (HCl), fluoride origin (HF), sulfuric acid (H_2SO_4), zinc chloride ($ZnCl_2$), and potassium hydroxide (KOH) are replaced by technical chemicals, which is cheaper and safer because of its lower concentration. The acetic anhydride $\{(CH_3CO)_2O\}$ and glacial acetic acid ($C_2H_4O_2$) used were of the p.a type. The concentration of pro-analyst and technical chemicals were 99.95% and 37-40%, respectively. Hypothetically substituting pro-analyst chemicals with technical chemicals would not affect the preparation results. This is because the chemicals in pollen preparations are used to remove minerals, not to determine the concentration of these minerals. Any other physical or chemical separation method

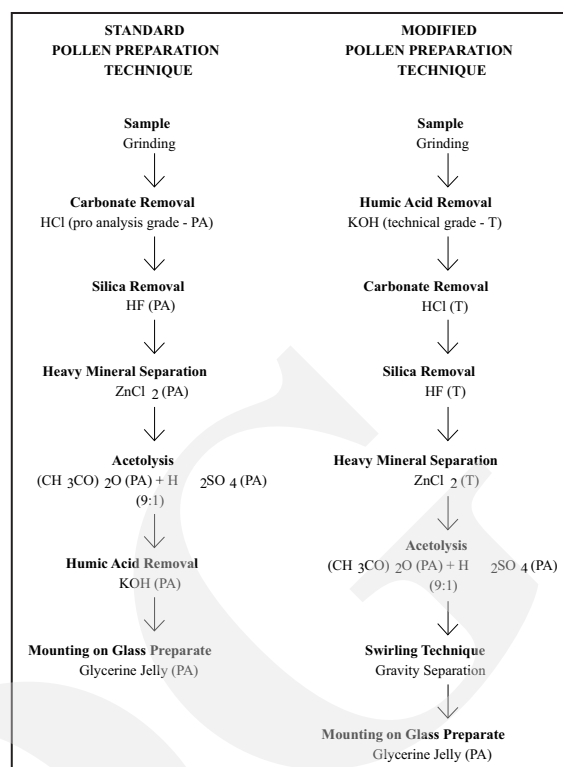


Figure 1. Comparison of pollen preparation steps between standard preparation techniques (Erdtman, 1972; Faegri and Iversen, 1975) used at the Palynology Laboratory, Center for Geological Survey (PSG) and modified preparation techniques.

can be used for the preparation of pollen and other microfossils, regardless their effectiveness. Even cleaning materials for everyday households such as various types of detergents and floor cleaners which generally contain oxidative/corrosive chemicals can also be used for the preparation of pollen and other microfossils.

The sequence of preparation steps is modified to make technical chemicals more effective, while also reducing the risk of accidents. KOH treatment is carried out at the beginning of process, because usually sediment samples rich in organic matter, especially peat, often containing bitumen. Bitumen causes the sample to become sticky and binds silica which is usually the main mineral in sediments. The KOH treatment will clean this bitumen thereby separating the mineral grains. The removal of carbonates (using HCl) and silica (using HF) in the next step becomes more effective for separating pollen and spores from their binding minerals. The separation of pollen grains and spores from

minerals will facilitate the separation of heavy minerals by gravity method using $ZnCl_2$. Filtration with a 105-micron sieve was carried out before the acetolysis treatment. The swirling technique that is also applied to separate fine mineral impurities, was performed after acetolysis.

The effectiveness of the modified pollen preparation technique was evaluated qualitatively based on three indicators *i.e.*, the amount of pollen grain-spore yield, the quality of the preparations and the cost of the chemicals used. The three indicators of this modified pollen preparation technique were compared with the standard pollen preparation technique that has been used at the Palynology Laboratory, Center for Geological Survey.

The yield of pollen-spore grains was evaluated based on the results of counting all pollen-spores present in one pollen slide of each technique. Since the preparation was not carried out quantitatively by calculating the concentration of pollen-spore per unit volume or sample weight, the evaluation of the effectiveness of the preparation technique was carried out based on the deviation of the proportion of pollen-spore produced by the two preparation techniques. The preparation technique is considered to be effective, if the value of the proportion of pollen and spores is the same, comparable or has a small deviation of the proportion.

The quality of the preparations was evaluated qualitatively based on the presence of non-pollen concentration in the slide. To get better photos, observations were made under the Olympus BX53 with magnifications of 100x, 200x, 400x and 1000x. The population density of pollen, spores, organic matter, and minerals in one slide was used as an indicator of the quality of the slide. This density value is obtained by comparing with a chart to estimate the volume percent of minerals. Chemical costs were calculated based on the volume of chemical required for one sample. The cost per one sample is calculated based on the purchase price.

Materials and Studied Sites

The effectiveness of the modified palynological preparation technique was tested by

carrying out the technique on five samples of organic clayey sediments. These sediments were collected from a coastal swamp deposit that is predicted to have been deposited at the end of Holocene, in Cilacap, Central Java (Figure 2). This sample was taken using a hand drill. Based on Simanjuntak and Surono, (1992), the drill points are located in a coastal alluvial deposits. This coastal deposit occupying the southern part of the studied area comprises fine-medium and very loose sand which shows the impression of layering (Herman, 2005). Those alluvial deposits overly Miocene and Pliocene formations that fill the Banyumas Basin, *i.e.* Halang, Kalipucang, and Gabon Formations. The Halang Formation is composed of alternating sandstone, claystone, marl, and tuff with breccia inserts as subsea fan deposits. The Breccia Member of this formation is made up of andesite, basalt, and limestone components, the base mass of coarse tuffaceous sandstone, sandstone intercalations and basalt lava. The Kalipucang Formation consists of reef limestones, locally clastic limestones, and at the bottom bituminous shale. The Gabon Formation comprises breccias with andesite components, with a bottom mass of tuff and coarse sandstone, localized lapilli tuff, lava, and lahar deposits, generally altered.

RESULTS

Pollen and Spore Grains Yield

The yield of pollen and spore grains and the value of the pollen-spore proportion of the five analyzed samples are shown in Table 1. The total pollen grains and spores in one slide is quite abundant. The standard pollen preparation technique of five samples yielded total pollen and spore grains per slide at a range of 370-577 and 11-154, respectively. Meanwhile, the modified pollen preparation technique of five samples resulted in total pollen and spore grains per slide at a range of 263 - 559 and 20 -145, respectively. The deviation of pollen-spore proportions for both techniques ranged from 0 - 6%. The deviation

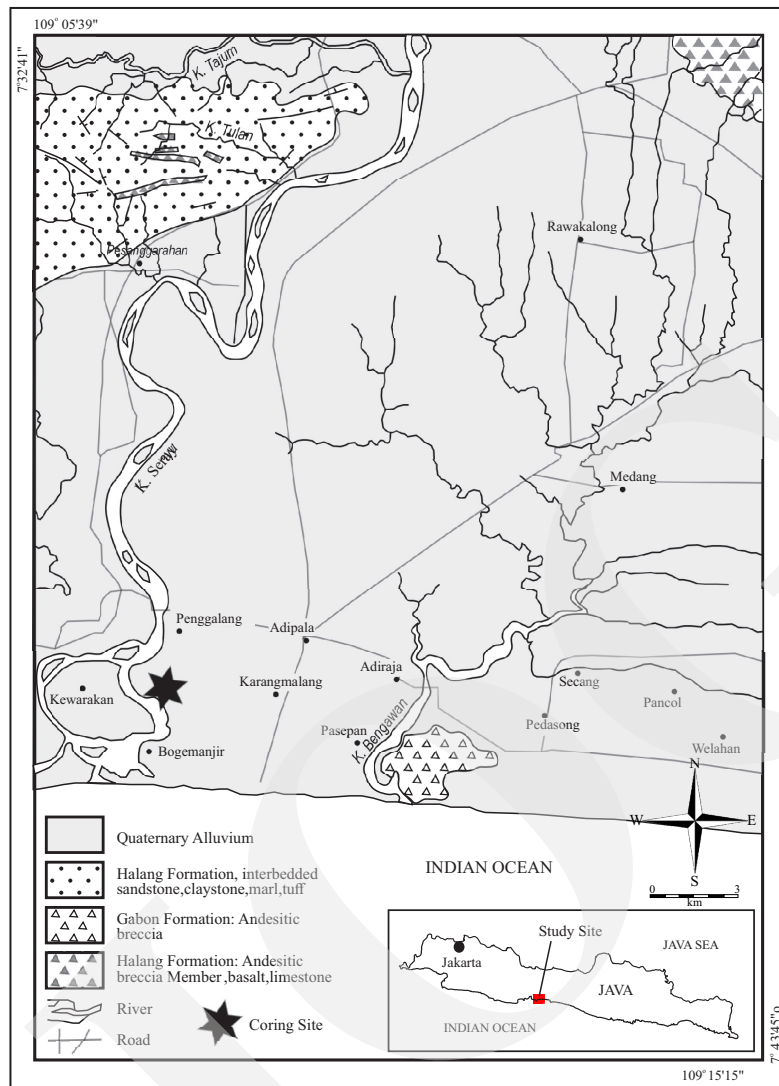


Figure 2. Geological map of the research area. The drill site is on the southern coastal plain of Cilacap which is composed at the top by coastal alluvium deposit. This alluvium covers the Miocene-Pliocene age formations that fill the Banyumas Basin, *i.e.* Halang, Kalipucang, and Gabon Formations.

values of pollen proportion obtained using the Traverse's diagram (Traverse, 1988) (Figure 3). It shows a comparable range between standard and modified preparation techniques (Table 1). Overlapping of the range of pollen proportion of the two techniques occurs in CLP-1, CLP-3, CLP-4 and CLP-5. In the CLP-2 sample, there is no overlapping values of pollen proportion of those two techniques.

Slide Quality

A comparison of photomicrograph slides between the standard and modified pollen preparation techniques are shown in Figures 4, 5, 6, 7,

and 8. Percentage of the residue in the pollen slide is estimated using mineral percentage estimation chart (Terry and Chiligar, 1955). The results of the estimated residual percentage are shown in Table 2. Contrast differences of visual cleanness of slides of the two techniques is presented in Figure 9.

Based on the percentage estimation of on-slide residue of the five samples (Table 2), the modified pollen preparation technique shows a comparable quality with the standard pollen preparation technique. The visibility of the pollen-spores was also comparable, showing that the pollen-spore specimens were clean without impurities. However,

Table 1. Comparison of the Total Yield, Pollen-Spore Proportion, and the Range of Pollen Proportion Values of Standard and Modified Pollen Preparation Techniques

| SAMPLE | DEPTH (cm) | POLLEN | | | | SPORES | | | | TOTAL POLEN- SPORES (grain) | | RANGE OF PROPORTION (%) | | DEVIATION OF POLEN-SPORE PROPORTION (%) |
|--------|---------------|---------------|----------|----------------|----------|---------------|----------|----------------|----------|-----------------------------------|----------|-------------------------|---------------|--------------------------------------------------|
| | | YIELD (grain) | | PROPORTION (%) | | YIELD (grain) | | PROPORTION (%) | | Standard | Modified | POLEN | | |
| | | Standard | Modified | Standard | Modified | Standard | Modified | Standard | Modified | | | | | |
| | | | | | | | | | | | | | | |
| CLP-1 | 130-132 | 384 | 368 | 71 | 71 | 154 | 145 | 29 | 29 | 538 | 513 | 68,87 – 73,13 | 68,73 – 73,27 | 0 |
| CLP-2 | 140-142 | 370 | 263 | 81 | 75 | 85 | 87 | 19 | 25 | 455 | 350 | 78,97 – 83,03 | 72,60 – 77,40 | 6 |
| CLP-3 | 150-152 | 394 | 401 | 97 | 95 | 11 | 20 | 3 | 5 | 405 | 421 | 95,30 – 98,7 | 93,29 – 96,71 | 2 |
| CLP-4 | 160-152 | 387 | 376 | 94 | 94 | 23 | 23 | 6 | 6 | 410 | 396 | 92,21 – 95,79 | 92,21 – 95,79 | 0 |
| CLP-5 | 170-172 | 577 | 559 | 85 | 86 | 100 | 90 | 15 | 14 | 677 | 649 | 83,47 – 86,53 | 84,45 – 87,55 | 1 |

at close-up appearances the modified technique seems to produce more cleanness of slide than the standard technique as shown in Figure 9.

Chemical Cost

Chemical cost was calculated per volumetric usage for one sediment sample. The calculation was based on the price list for the procurement of chemicals in 2021 at the Center for Geological Survey, Geological Agency.

The total cost of chemicals for the standard pollen preparation technique was IDR 123.210,00 per sample. The modified pollen preparation technique required a chemical cost of IDR. 36.085,00. Sulfuric acid (H_2SO_4), acetic anhydride ($(CH_3CO)_2O$), acetic acid ($C_2H_4O_2$) and glycerin jelly in both techniques used pro-analyst materials.

Duration of Preparation

Both preparation methods consist of the same steps (although in different order) except the swirling technique. Evaporating dish and pipette for the swirling technique step were used. The sample residue was placed in the evaporating dish and diluted using aquadest. The dish was rotated slowly by hand to separate the fine-sized floating organic material from the coarser sample fragments that settle to the bottom of the dish. Floating fine organic material was carefully sucked up using a pipette and collected in another dish before centrifuged. This step was repeated for several times until no more floating fine organic materials from the residue. The collected fine organic material was then wet sieved using 5 μm aperture filter cloth before another centrifuging.

Such swirling technique step makes the modified preparation method require a longer preparation time than the standard one. The time duration required for the swirling technique step depends on the concentration of fine grains and organic materials that make up the sample. The higher the concentration of fine grains and organic materials, the longer the duration of swirling technique step. For a sample that produce a concentrated residue such as high bituminous samples, the swirling tech-

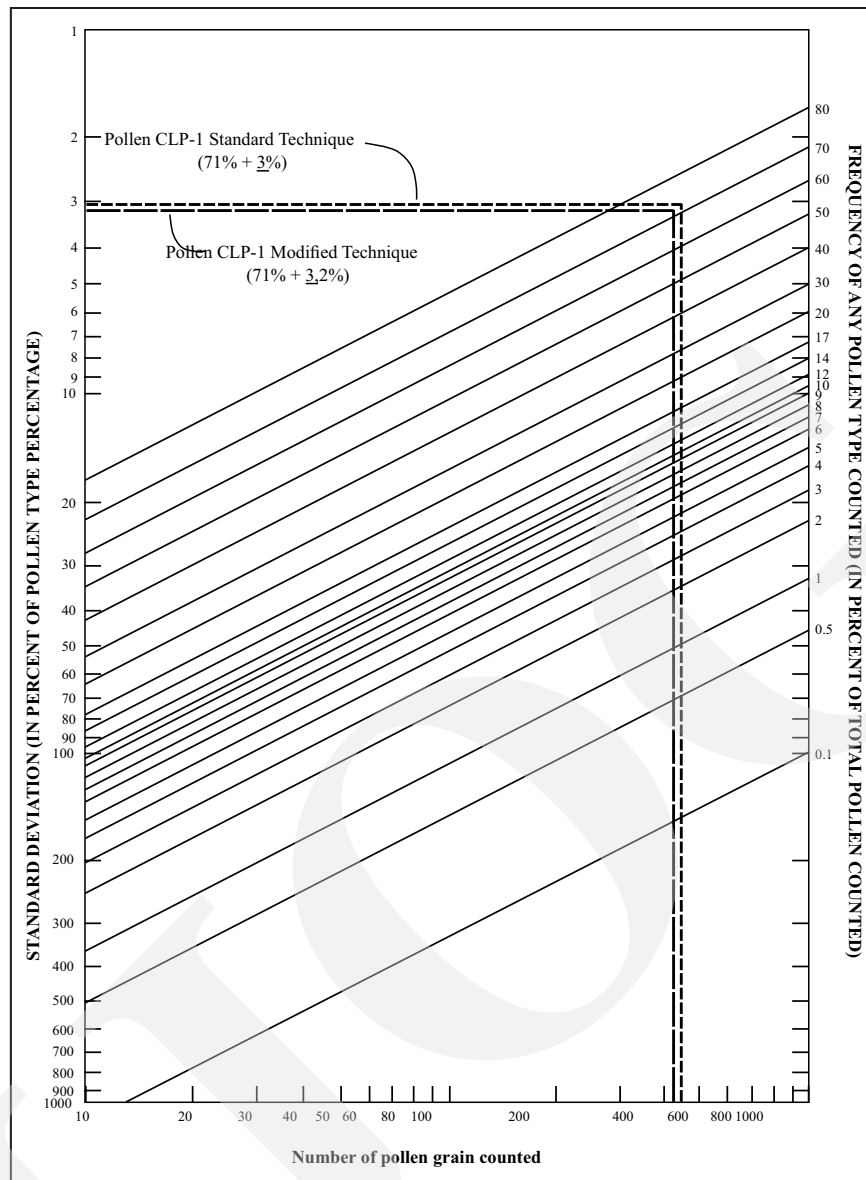


Figure 3. Traverse (1988) diagram, used to determine the deviation based on the proportion of pollen-spores, and total pollen-spore yields. Proportion of pollen in the CLP-1 was used as an example. The range of pollen proportions for CLP-1 using standard and modified preparation techniques, each gave results in almost the same range of 68.87 - 73.13% and 68.73 - 73.27% respectively.

nique may be repeated for 6 times and take up to 60 minutes. Consequently, the swirling technique step may add up to 60 minutes longer of duration of pollen preparation per sample.

DISCUSSION

Effectivity

The pollen slides produced by the modified preparation technique had a quality comparable

to that of the standard preparation technique in terms of the yield of pollen-spores. The modified technique even shows better visibility in term of cleanness compared to the standard technique, most probably due to application of the swirling technique step. The swirling technique followed by very-fine grains sieving, may be capable in removing more non-pollen materials. This leads to a cleaner residue and a better visibility of pollen in slide. However, several notes need to be given to this comparison method.

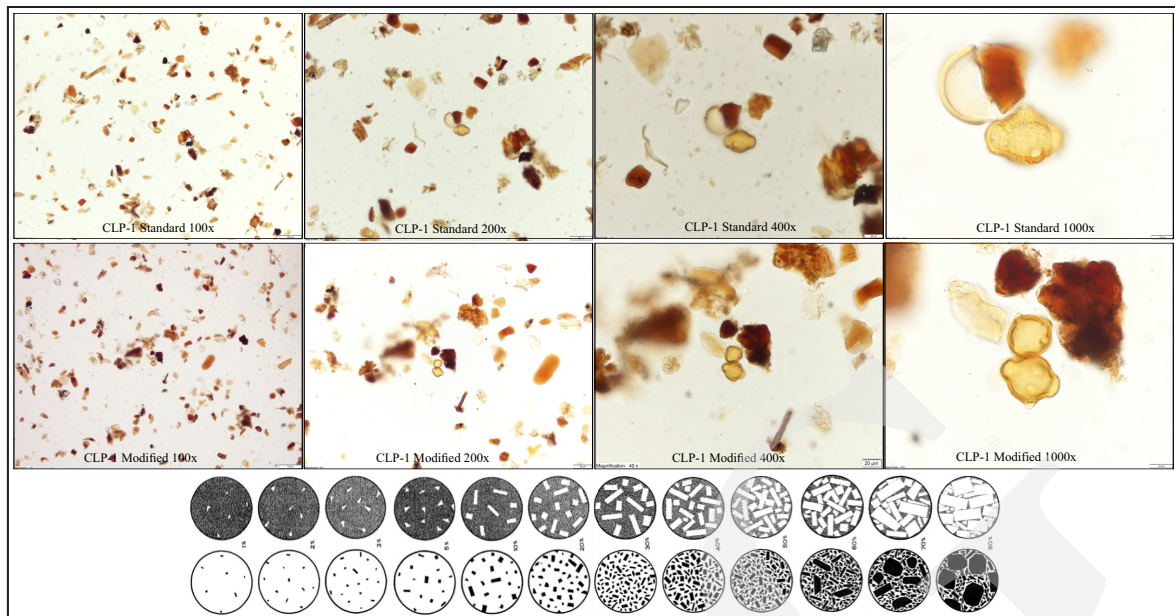


Figure 4. Photomicrographs of a qualitative comparison of visibility between the results of the standard pollen preparation technique (lower row) and the modified technique for CLP-1 sample (upper and middle rows).

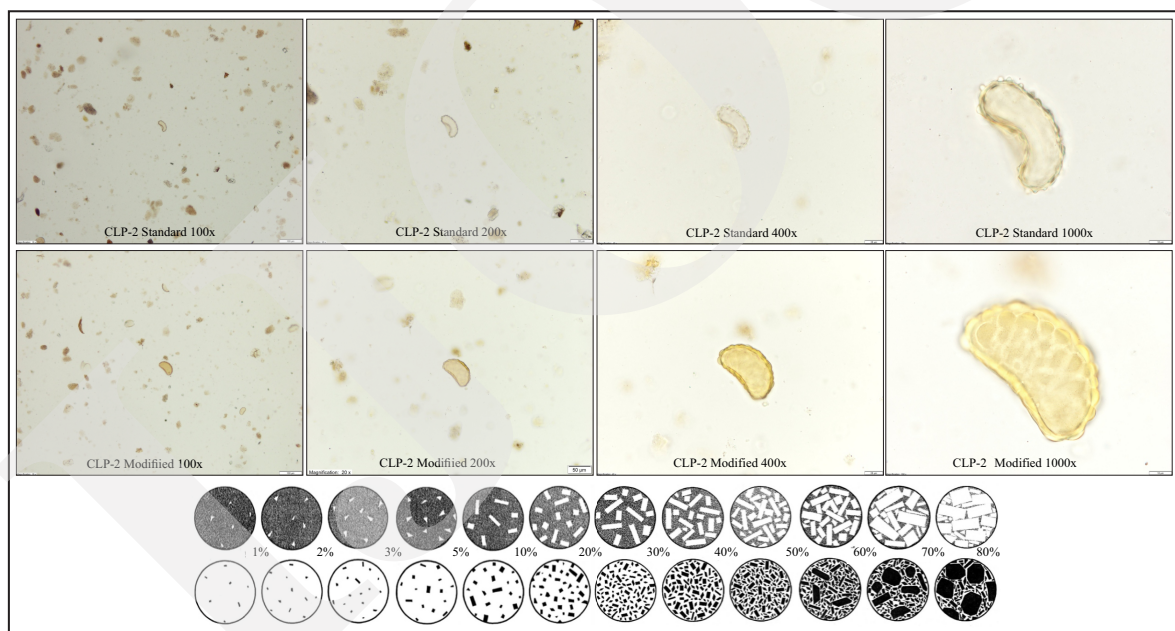


Figure 5. Photomicrographs of a qualitative comparison of visibility between the results of the standard pollen preparation technique (lower row) and the modified technique for CLP-2 sample (upper and middle rows).

First, this comparison method is a qualitative one. The qualitative comparison (which are merely based on the similarity/comparability of pollen-spore proportions and/or proportion of vegetation groups and/or proportion of pollen and spore types) would highly depends on the counts of pollen-spores. The more counts,

the more reliable the comparison results. Second, the comparability of pollen and spore proportion was merely assessed based on the magnitude of overlapping of the proportion after considering the deviation. The greater the overlapping, the more comparable the proportions.

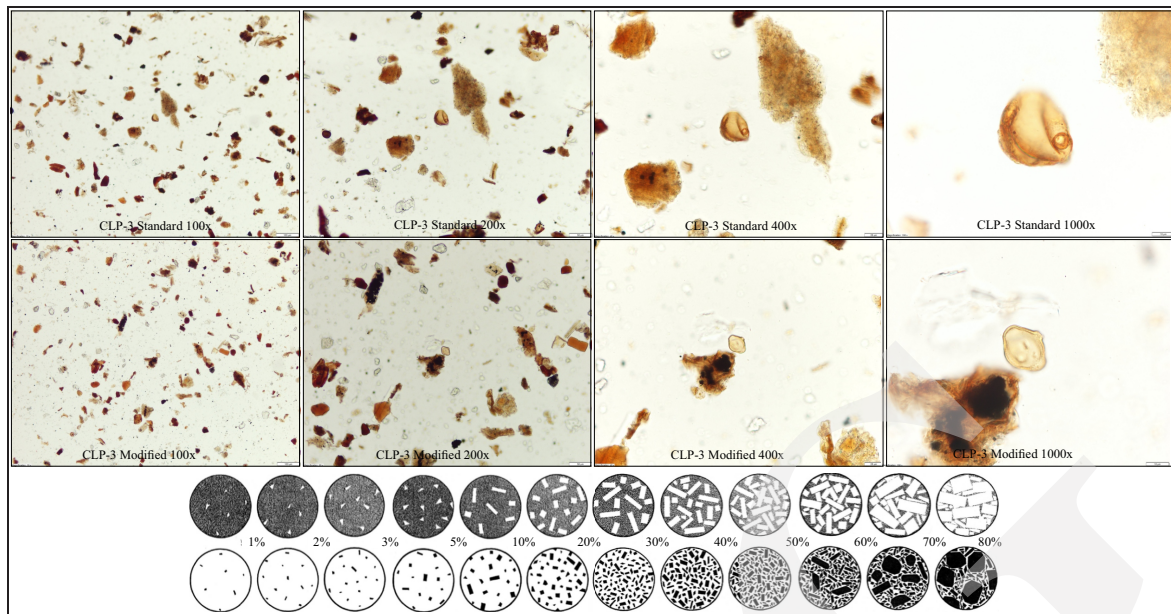


Figure 6. Photomicrographs of a qualitative comparison of visibility between the results of the standard pollen preparation technique (lower row) and the modified technique for CLP-3 sample (upper and middle rows).

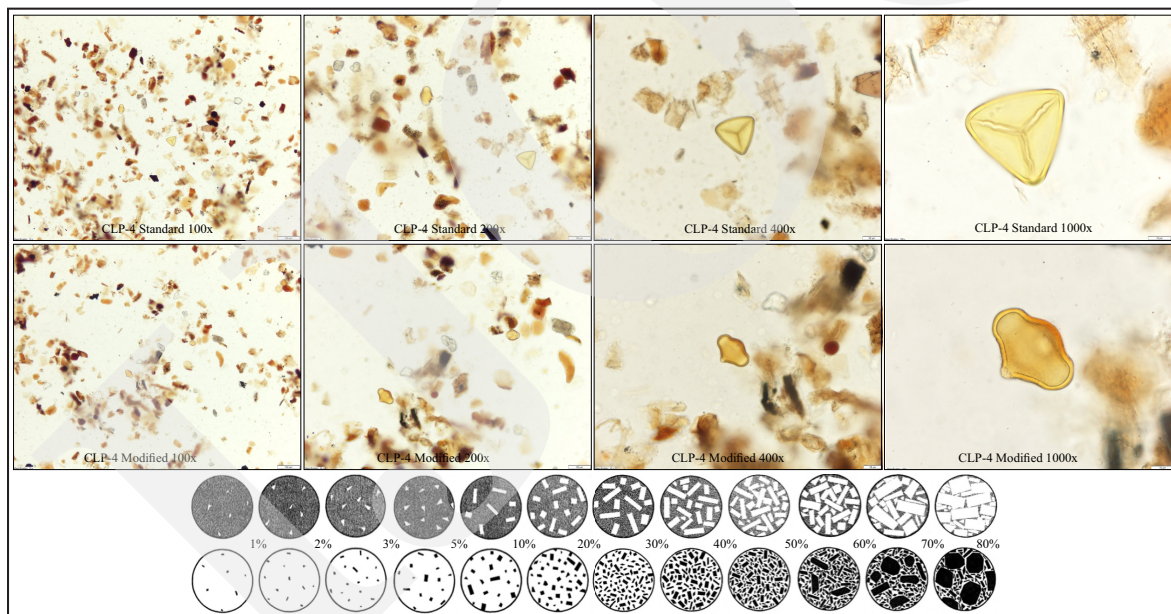


Figure 7. Photomicrographs of a qualitative comparison of visibility between the results of the standard pollen preparation technique (lower row) and the modified technique for CLP-4 sample (upper and middle rows).

Efficiency

The modified pollen preparation technique evidently to be more efficient in a chemical budget than the standard preparation technique. This efficiency will increase, if the sample volume are reduced, leading to a decrease the chemical cost by half.

Laboratory Work Safety

The modified pollen preparation technique uses several chemicals with low concentrations. This reduces the risk of work accidents as well as the risk of contamination to the environment due to chemical waste disposal. However, standard chemical laboratory facilities are prerequisite for

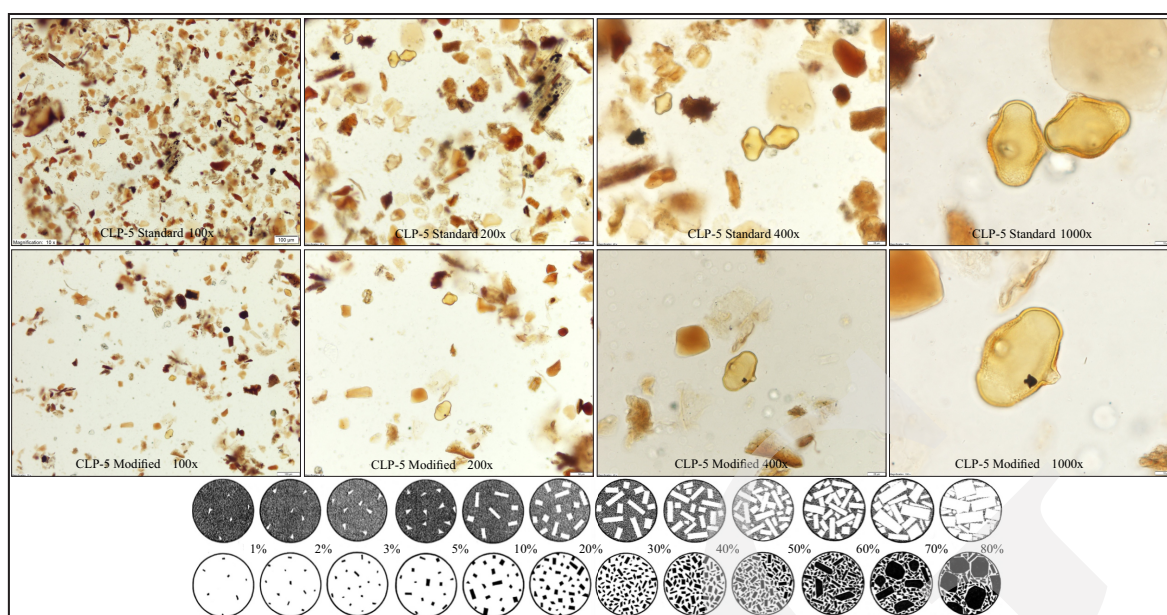


Figure 8. Figure 7. Photomicrographs of a qualitative comparison of visibility between the results of the standard pollen preparation technique (lower row) and the modified technique for CLP-5 sample (upper and middle rows).

Table 2. Comparison of percentage estimates of the residue on slides under a microscope at 100x, 200x and 400x magnification. The visibility of the pollen-spores was determined based on the appearance of the pollen-spores at 1000x magnification.

| SAMPLE | DEPTH (cm) | PERCENTAGE ESTIMATES OF RESIDU (%) | | | | | | VISIBILITY OF POLLEN-SPORES | |
|--------|---------------|------------------------------------|-------|-------|----------|-------|-------|-----------------------------|----------|
| | | Standard | | | Modified | | | Standard | Modified |
| | | 100x | 200x | 400x | 100x | 200x | 400x | | |
| CLP-1 | 130-132 | 10-20 | 10-20 | 10-20 | 10-20 | 10-20 | 10-20 | clear | clear |
| CLP-2 | 140-142 | 3-5 | 2-3 | 1-2 | 3-5 | 2-3 | 1-2 | clear | clear |
| CLP-3 | 150-152 | 5-10 | 5-10 | 5-10 | 5-10 | 5-10 | 5-10 | clear | clear |
| CLP-4 | 160-152 | 20-30 | 20-30 | 20 | 20-30 | 20-30 | 20 | clear | clear |
| CLP-5 | 170-172 | 30-40 | 30-40 | 30-40 | 10-20 | 10-20 | 10-20 | clear | clear |

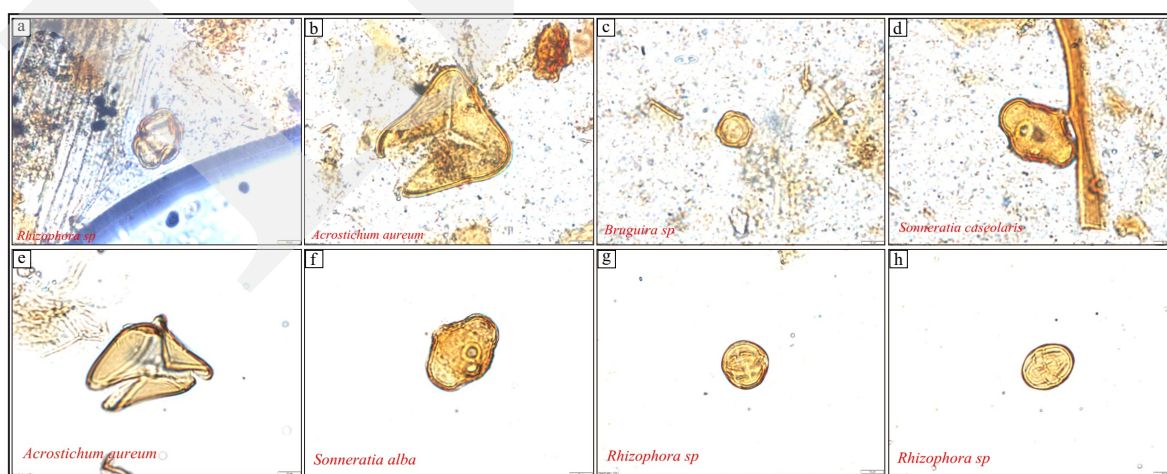


Figure 9. Photomicrographs of a comparison of visual cleanness of slides between the standard pollen preparation technique (a-d) and the modified technique (e-h) at the same magnification (the scale at right-bottom corner is 10 μ m) for CLP-1 sample of several mangrove pollens. Slide of the standard technique shows more impurities of fine grains. Application of swirling technique removed impurities of fine grains lead to cleaner slide as shown in figures e-h.

Table 3. Comparison of Total Cost of Chemicals between Standard and Modified Pollen Preparation Techniques

| | CHEMICAL | UNIT (lt/kg) | UNIT PRICE (IDR thousand) | | PRICE PER SAMPLE (IDR thousand) | |
|---|-------------------------------------------------------------|-----------------|---------------------------|------|---------------------------------|------------|
| | | | p.a | Tec. | standard | modified |
| 1 | Fluoric Acid (HF) | 1 lt | 942 | 30 | 23.55 p.a | 0.75 |
| 2 | Chloric Acid (HCl) | 1 lt | 490 | 35 | 12.25 p.a | 0.875 |
| 3 | Sulfuric Acid (H ₂ SO ₄) | 1 lt | 273 | | 2.73 p.a | 2.73 p.a |
| 4 | Zink Chloride (ZnCl ₂) | 1 lt | 1,842 | 65 | 46.05 p.a | 1.625 |
| 5 | Potassium Hydroxide (KOH) | 1 kg | 391 | 50 | 9.775 p.a | 1.25 |
| 6 | Acetic Anhydride ((CH ₃ CO) ₂ O) | 1 lt | 2,280 | | 20.52 p.a | 20.52 p.a |
| 7 | Acetic Acid (C ₂ H ₄ O ₂) | 1 lt | 613 | | 15.325 p.a | 15.325 p.a |
| 8 | Glycerine Jelly | 1 lt | 400 | | 0.01 p.a | 0.01 p.a |
| | Total cost | | | | 123.210 | 36.085 |



Figure 10. Swirling technique using evaporating dish and pipette applied in the modified preparation technique (left) prior to sieving using 5 µm filter cloth (right).

this technique to be applied, so that they cannot be widely applied, especially in universities that are not equipped with adequate chemistry laboratories.

CONCLUSIONS

The development of pollen preparation techniques has been carried out by replacing several pro-analyst chemicals with technical chemicals and changing the treatment sequence from the standard pollen preparation technique (Erdtman, 1972) used in the Center for Geological Survey, Geological Agency. Evaluation of the results of the two techniques is as follows:

1. The replacement of pro-analyst with technical chemicals improves work safety in the palynology laboratory.
2. The modified pollen preparation technique can produce pollen slide with comparable

quality to Erdtman's (1972) standard pollen preparation technique both in terms of pollen and spores yield and slide visibility. The application of swirling technique step in the modified technique seems to produce better quality of slide cleanness.

3. Cost of chemicals for pollen preparation of a sample using standard preparation techniques in the Palynology Laboratory of Center is IDR. 123.210,00. The replacement of p.a. chemicals of HF, HCl, KOH, ZnCl₂ with technical chemicals save the cost of chemicals by IDR. 87.125,00.

ACKNOWLEDGEMENTS

The authors would like to thank Dr. Purna S. Putra of the Research Center for Geological Hazards, National Research and Innovation Agency who provided a core of hand auger used in this

study. The authors also express a gratitude to anonymous reviewers who have provided input to improve this paper. In this study, the first author carried out the pollen preparation and taking photographs of the pollen slide under a microscope. The second author prepared drawings, tables, and paper writing. Both authors contributed equally to this study.

REFERENCES

- Anderson, J.A.R. and Muller, J., 1975. Palynological study of a Holocene peat and a Miocene coal deposit from N.W. Borneo. *Review of Palaeobotany and Palynology*, 19, p.291-351.
- Erdtman, G., 1972. *Pollen Morphology and Plant Taxonomy*. Hafner Publishing Co., New York. 553pp.
- Faegri, K. and Iversen, J., 1975. *Textbook of Pollen Analysis*, 3rd Revised Edition. Hafner Press, New York, 295pp.
- Flenley, J.R., 1972. Evidence for Quaternary vegetational change in New Guinea. In: Ashton, P. and Ashton, M. (eds.), *The Quaternary Era in Malesia, Transaction of the Second Aberdeen-Hull Symposium on Malesian Ecology*, Miscellaneous Series, 13, p.99-108. Department of Geography, University of Hull, U.K.
- Flenley, J.R., 1973. The use of modern pollen rain samples in the study of vegetational history of tropical regions. In: Birks, H.J.B. and West, R.G. (eds.), *Quaternary Plant Ecology, The 14th Symposium of The British Ecological Society*, p.131-141. Blackwell Scientific Publications, Oxford, U.K.
- Germeraad, J., Hopping, C.A., and Muller, J., 1968. Palynology of Tertiary sediments from tropical areas. *Review of Palaeobotany and Palynology*, 6 (3-4), p.189-348. DOI: 10.1016/0034-6667(68)90051-1.
- Herman, D.Z., 2005. Kegiatan pemantauan dan evaluasi konservasi sumberdaya mineral daerah Kabupaten Cilacap, Provinsi Jawa Tengah. *Kolokium Hasil Lapangan, DIM*, Bandung.
- Hopping, C.A., 1967. Palynology and the Oil Industry. *Review of Palaeobotany and Palynology*, 2, p.23-48.
- Muller, J., 1961. Pollen from the South China Sea (A correction). *Sarawak Museum Journal*, 13, p.325.
- Muller, J., 1964. A palynological contribution to the history of the mangrove vegetation in Borneo. In: Cranwell, L. (ed.), *Ancient Pacific Floras*. University of Hawaii Press, Honolulu, p.33-42.
- Muller, J., 1966. Montane pollen from the Tertiary of NW Borneo. *Blumea*, 14 (1) p.231-235.
- Muller, J., 1968. Palynology of the Pedawan and Plateau Sandstone formations (Cretaceous-Eocene in Sarawak, Malaysia. *Micropalaeontology*, 14, p.1-37. DOI: 10.2307/1484763
- Muller, J., 1972. Palynological evidence for change in geomorphology, climate and vegetation in the Mio-Pliocene of Malesia. In: Ashton, P. and Ashton, M. (eds.), *The Quaternary era in Malesia. Department of Geography, University of Hull, Miscellaneous. Series*, 13, p.6-16.
- Polak, E., 1933. Ueber Torfund Moor in Niederländisch Indien. *Verhandelingen Koninklijke Academie van Wetenschappen, Tweede Sectie*, 30 (3), p.1-85.
- Powell, J., 1970. *The impact of man on the vegetation of the Mt. Hagen Region, New Guinea. Unpublished Ph.D. Thesis*. Australian National University, Canberra.
- Simanjuntak, T.O. and Surono, 1992. *Peta Geologi Lembar Pangandaran, Jawa, skala 1:100.000*. Pusat Penelitian dan Pengembangan Geologi (P3G), Bandung.
- Sowmi, K., 1973. Florschuetzia, a fossil Sonneratioid pollen genus from Sulawesi, Indonesia. *Science Report of Tohoku University, Japan, series 4 (biol.)*, 36, p.261-266.
- Terry, R.D. and Chilingar, C.V., 1955. Summary of "Concerning some additional aids in studying sedimentary formations" by M.S. Shvetsov. *Journal of Sedimentary Petrology*, 25, p.229-214.
- Traverse, A., 2007. *Paleopalynology*. 2nd Edition,

- printed with correction, Springer, The Netherlands. Unwin Hyman Ltd, London.
- Van Veen, F.R., 1958. Pollen from the South China Sea. *Sarawak Museum Journal*, 8, p.351-356.
- Walker, D., 1970. The changing vegetation of the montane tropics. *Search*, 1, p.217 - 221.